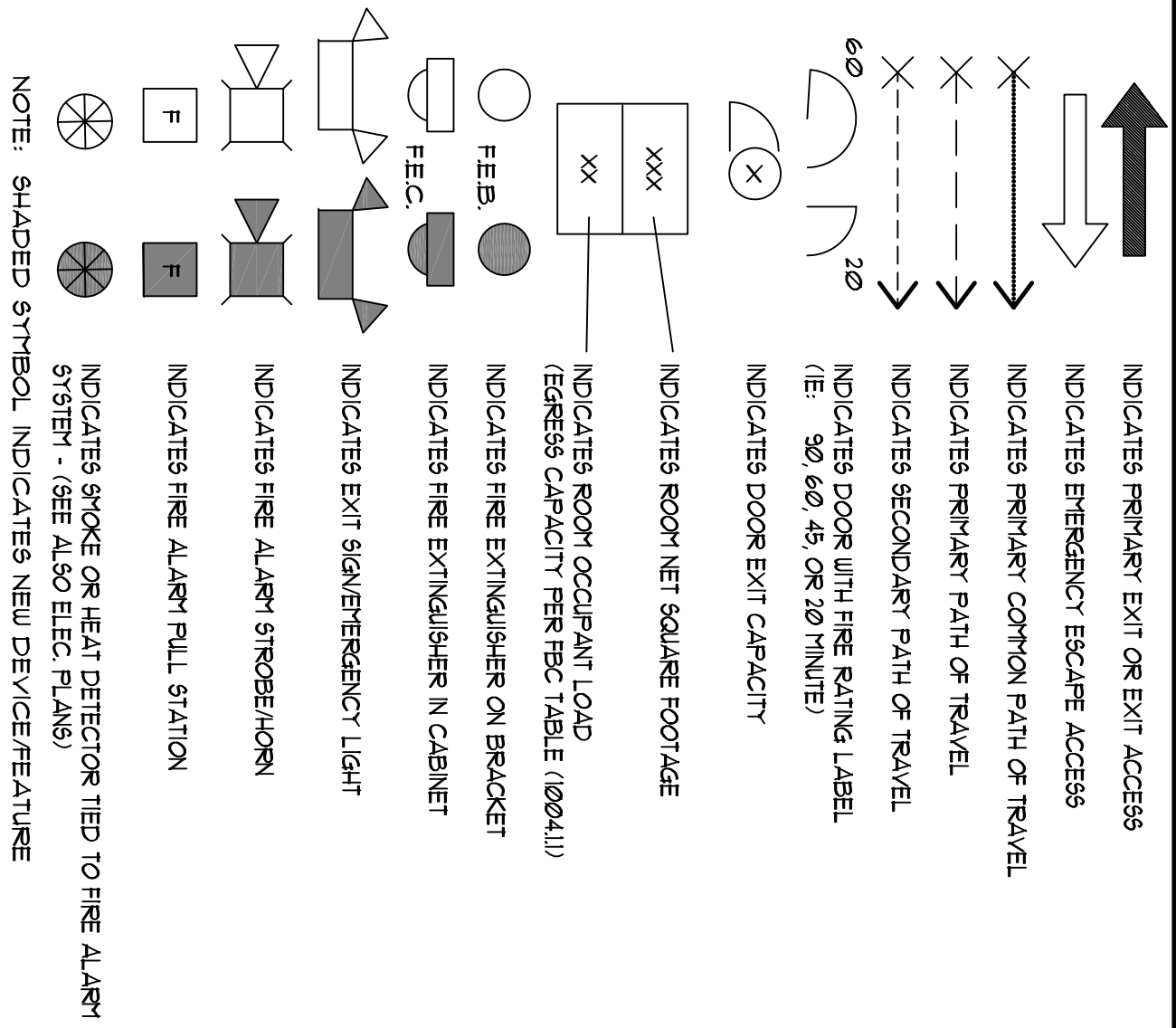
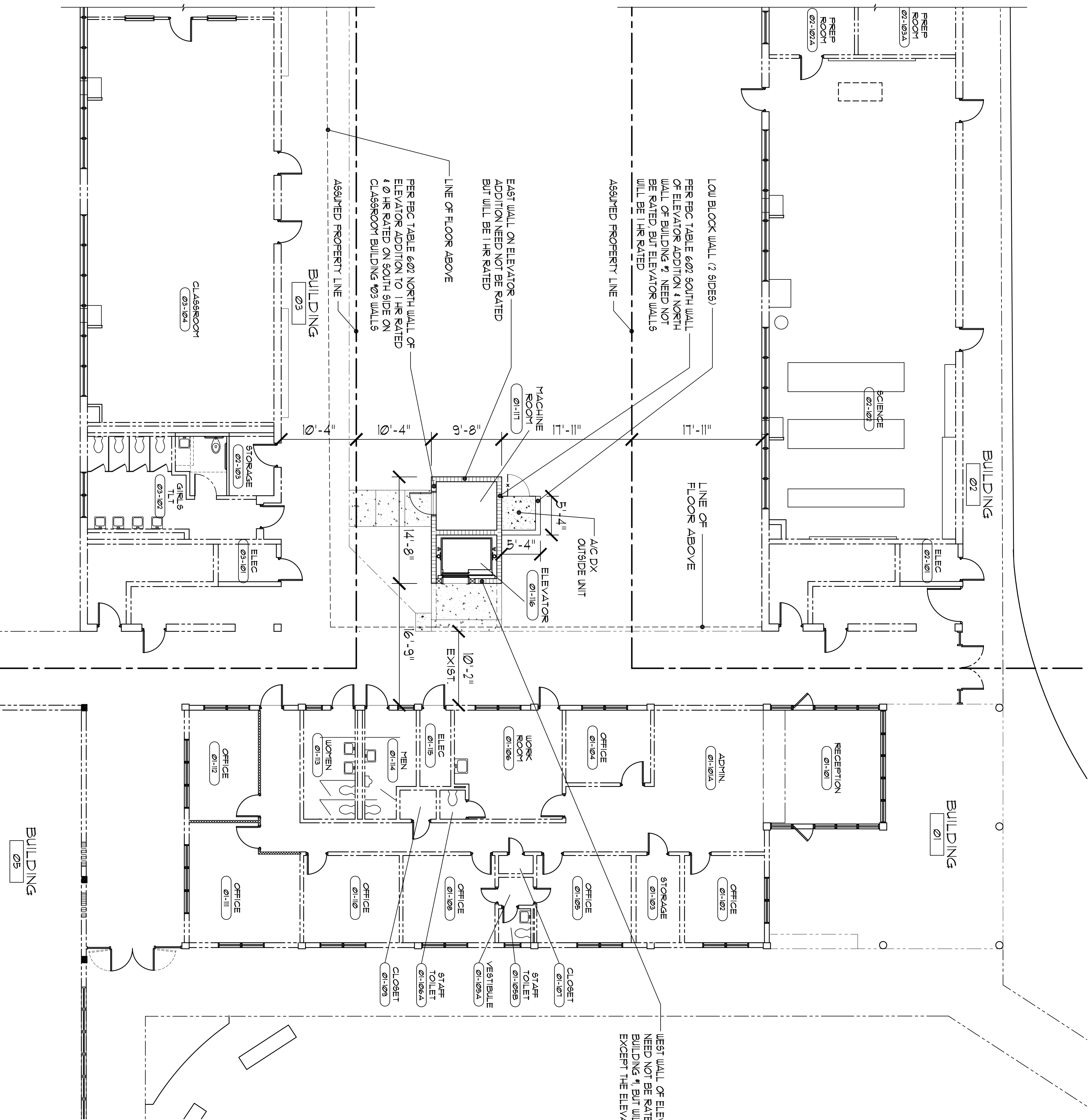


LIFE SAFETY LEGEND



ALLOWABLE AREAS

ELEVATOR ADDITION SHALL BE CONSIDERED AN ADDITION TO BUILDING #1
 EXISTING BUILDING # AREAS
 1ST FLOOR : 3400 SF
 2ND FLOOR : 3000 SF
 ALLOWABLE AREAS PER FBC TABLE 503
 EACH FLOOR : 14500 SF
 ELEVATOR ADDITION AREAS
 1ST FLOOR : 142 SF
 2ND FLOOR : 11 SF
 WALLS BETWEEN ELEVATOR ADDITION AND OTHER BUILDINGS TO BE RATED PER FBC TABLE 602



PARTIAL CAMPUS LIFE SAFETY PLAN

SCALE: 1/8" = 1'-0"



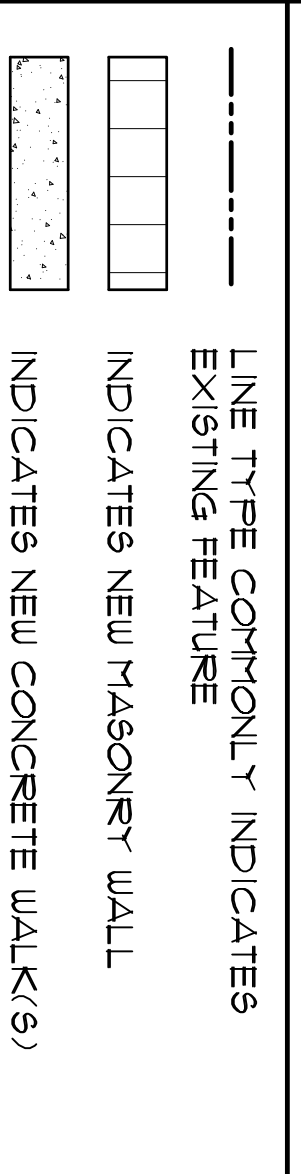
NORTH

1

SCALE NOTED ON DRAWINGS REPRESENTS 24" X 36" SIZE SHEETS OF PAPER

© 2010 ARCHITECTS IN ASSOCIATION, 2009 AND 2008, INC.

LEGEND



GENERAL NOTES

- VERIFY ACTUAL DIMENSIONS & CONDITIONS IN FIELD AND NOTIFY ARCHITECT OF ANY PERTINENT DISCREPANCIES
- CONFERT ALL REMOVAL WORK WITH REMOVAL PLANS (ARCHITECTURAL, MECHANICAL & ELECTRICAL)

LIFE SAFETY NOTES

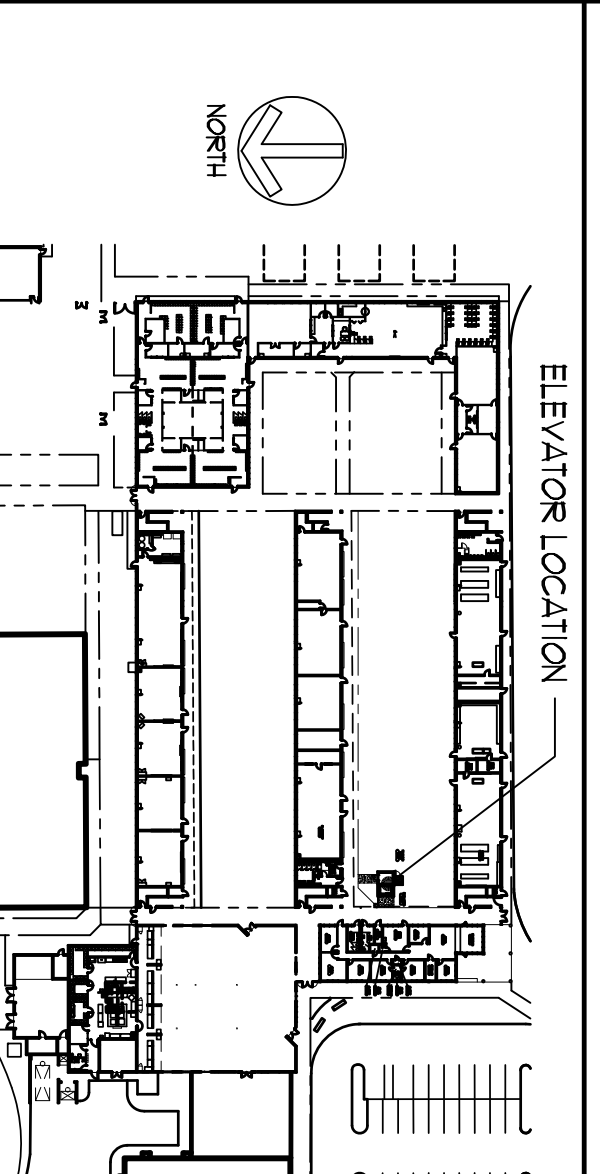
- LIFE SAFETY / CODE COMPLIANCE NOTES
- ABCE - AMERICAN SOCIETY OF CIVIL ENGINEERS - ABCE 1-99
 - FLORIDA BUILDING CODE (FBC) 2007 W/2009 AMENDMENTS
 - FLORIDA GAS CODE (FGC) - 2004 W/2009 AMENDMENTS
 - FLORIDA MECHANICAL CODE (FMC) - 2001 W/2009 AMENDMENTS
 - FLORIDA PLUMBING CODE (FPC) - 2001 W/2009 AMENDMENTS
 - NATIONAL ELECTRICAL CODE (NEC) 2009, (NFPA 70)
 - FLORIDA FIRE PROTECTION CODE (FFPC) 2001
 - OTHER NFPA CODES AS APPLICABLE
 - OTHER PERTINENT CODES AS REFERENCED IN THE ABOVE OCCUPANCY CLASSIFICATION
 - FLORIDA BUILDING CODE - EDUCATIONAL (E) - EXISTING
 - ELEVATOR ADDITION
 - FLORIDA FIRE PREVENTION CODE - EDUCATIONAL (EXISTING)
 - ELEVATOR ADDITION

- CONSTRUCTION TYPE
- EXISTING WAS TYPE IV SECCI (EQUAL TO NEW TYPE IIB) ADDITION IS TYPE IIB W/O SPRINKLERS
 - FIRE PROTECTION (SPRINKLER SYSTEM)
 - PER FBC FIGURE 903.2 EXISTING EDUCATIONAL BUILDINGS ON THIS CAMPUS ARE EXEMPT FROM THE INCLUSION OF A FIRE SPRINKLER SYSTEM AND PER FBC 903.2.2 THE EXCEPTION ALSO INDICATES 'AN AUTOMATIC FIRE SPRINKLER SYSTEM IS NOT REQUIRED FOR WORKS OF THE LOW-RISE AREA OF THE BUILDING IS BEING RETROFIELD'
 - EGRESS & EXITS
 - TRAVEL DISTANCE FROM ELEVATOR VESTIBULE TO EXISTING STAIRS IS WITHIN 150 FT. ELEVATOR IS NOT A MEANS OF EGRESS. OTHER EGRESS IS NOT IMPACTED.

GENERAL NOTES

SEE MECHANICAL ELECTRICAL AND PLUMBING DRAWINGS FOR LOCATIONS OF TYPE IIB SPRINKLER LIGHTS, SMOKE OR HEAT DETECTORS AND FIRE ALARM SYSTEMS.

CAMPUS KEY PLAN



REVISIONS & UPDATES

| NO. | DATE | DESCRIPTION |
|-----|----------|----------------------------------|
| 1 | 05.28.10 | ISSUED FOR PERMIT & CONSTRUCTION |
| 2 | 05.21.10 | ISSUED FOR PRICING |
| 3 | 05.07.10 | PRELIMINARY FOR CODE ENFORCEMENT |

NEW ELEVATOR
EDGEWOOD JUNIOR/SENIOR HIGH SCHOOL
 FLORIDA
 HERRITT ISLAND
LIFE SAFETY PLAN

JOHN C. ZWICK, R.A.
 FL. REG. A620009571
 ARCHITECTS IN ASSOCIATION ROAD & ZWICK, INC.
 600 FLORIDA AVENUE SUITE 202 COCOA, FLORIDA 32922 TELEPHONE (321) 631-8039