

EXISTING PANEL SCHEDULE											
PANEL: B2LV2			RATING: 225A MLO			LUG LOCATION: BOTTOM			A.I.C.: EXISTING		
SERVICE: 120/208V, 3ø, 4W			MOUNTING: SUFACE			TYPE: EXISTING					
CKT	DESCRIPTION	KVA	POLE	TRIP	BRANCH	CIRCUIT	CKT	DESCRIPTION	KVA	POLE	TRIP
1	RECEPT - ROOM 02-204	1	20				a 2	JANITOR CLOSET	1	20	
3	RECEPT - ROOM 02-204	1	20				b 4	OUTSIDE LIGHTING	1	20	
5	SPARE	1	20				c 6	SPARE	1	20	
7	RECEPT - ROOM 02-205	1	20				d 8	CONVENIENCE OUTLET	1	20	
9	RECEPT - ROOM 02-205	1	20				b 10	SPARE	1	20	
11	RECEPT - ROOM 02-205	1	20				c 12	SPARE	1	20	
13	RECEPT - ROOM 02-205	1	20				d 14	HWH	2	30	
15	RECEPT - ROOM 02-205	1	20				b 16		1	20	
17	RECEPT - ROOM 02-206	1	20				c 18	SPARE	1	20	
19	RECEPT - ROOM 02-206	1	20				d 20	SPARE	1	20	
21	RECEPT - ROOM 02-206	1	20				b 22	SPARE	1	20	
23	RECEPT - ROOM 02-206	1	20				c 24	SPACE	1	20	
25	RECEPT - ROOM 02-206	1	20				d 26		1	20	
27	SS-1(U)-1	0.50	2	20	10	- 10	3/4	b 28	EXISTING	3	30
29		0.50					c 30				

EQUIPMENT SERVED		CONNECTED LOAD	LF	DF	DEMAND LOAD	REMARKS:
EXISTING LOAD		15.1			15.1	- PROVIDE TYPE WRITTEN DIRECTORY
NEW EQUIPMENT		1.00			1.00	# PROVIDE NEW MATCHING CIRCUIT BREAKER
TOTAL KVA:		16.1				
AMPS:		44.7				

EXISTING PANEL SCHEDULE											
PANEL: B3LV2			RATING: 225A MLO			LUG LOCATION: BOTTOM			A.I.C.: EXISTING		
SERVICE: 120/208V, 3ø, 4W			MOUNTING: SUFACE			TYPE: SQUARE-D NQ00					
CKT	DESCRIPTION	KVA	POLE	TRIP	BRANCH	CIRCUIT	CKT	DESCRIPTION	KVA	POLE	TRIP
1	RECEPT - ROOM 03-205	1	20				a 2	EF-1	1	20	
3	RECEPT - ROOM 03-205	1	20				b 4	RECEPTS - ROOM 03-108	1	20	
5	HAND DRYER	1	20				c 6	RECEPTS - ROOM 03-108	1	20	
7	RECEPT - ROOM 03-206	1	20				d 8	RECEPTS - ROOM 03-108	1	20	
9	RECEPT - ROOM 03-206	1	20				b 10	SPARE	1	20	
11	RECEPT - ROOM 03-206	1	20				c 12	RECEPT-ELEV SUMP PUMP # 0.50	1	20	12 12 12 1/2
13	RECEPT - ROOM 03-206	1	20				d 14	ELEVATOR CAB LTC (GFCI) # 0.50	1	20	12 12 12 1/2
15	RECEPT - ROOM 03-206	1	20				b 16	ELEV PIT LTS & RECEPTS # 0.18	1	20	12 12 12 1/2
17	HAND DRYER	1	20				c 18	SPARE	1	20	
19	RECEPT - ROOM 03-207	1	20				d 20	SPARE	1	20	
21	RECEPT - ROOM 03-207	1	20				b 22	RECEPT-MACHINE ROOM # 0.36	1	20	12 12 12 1/2
23	RECEPT - ROOM 03-207	1	20				c 24	SPARE	1	20	
25	RECEPT - ROOM 03-207	1	20				d 26		1	20	
27	SPARE	1	20				b 28	TVSS	3	30	
29	SPARE	1	20				c 30				

EQUIPMENT SERVED		CONNECTED LOAD	LF	DF	DEMAND LOAD	REMARKS:
EXISTING LOAD		15.1			15.1	- PROVIDE NEW TYPE WRITTEN DIRECTORY
NEW RECEPTS		1.44			1.44	# PROVIDE NEW MATCHING CIRCUIT BREAKER
NEW LTG		0.66	1.25		0.62	
TOTAL KVA:		17.3				
AMPS:		48				

EXISTING PANEL SCHEDULE											
PANEL: B3HV2			RATING: 400A MLO			LUG LOCATION: BOTTOM			A.I.C.: EXISTING		
SERVICE: 277/480V, 3ø, 4W			MOUNTING: SUFACE			TYPE: EXISTING					
CKT	DESCRIPTION	KVA	POLE	TRIP	BRANCH	CIRCUIT	CKT	DESCRIPTION	KVA	POLE	TRIP
1	LIGHTING- ROOM 202-203	1	20				a 2	SPARE	1	20	
3	LIGHTING- ROOM 204-205	1	20				b 4	SPARE	1	20	
5	LIGHTING- ROOM 206-207	1	20				c 6	SPARE	1	20	
7	LIGHTING- ROOM 104-105	1	20				d 8	SPARE	1	20	
9	LIGHTING- BATHROOMS	1	20				b 10	SPARE	1	20	
11	SPARE	1	20				c 12	SPARE	1	20	
13	SPARE	1	20				d 14	SPARE	1	20	
15	ELECT ROOM LIGHT	1	20				b 16	SPARE	1	20	
17	SPARE	1	20				c 18	SPARE	1	20	
19	SPARE	1	20				d 20	SPACE	1	20	
21	SPARE	1	20				b 22	SPACE	1	20	
23	SPARE	1	20				c 24	SPACE	1	20	
25	SPARE	1	20				d 26	SPACE	1	20	
27	SPARE	1	20				b 28	SPACE	1	20	
29	SPARE	1	20				c 30	SPACE	1	20	
31	SPARE	1	20				d 32	SPACE	1	20	
33	SPARE	1	20				b 34	SPACE	1	20	
35	SPARE	1	20				c 36	SPACE	1	20	
37							d 38	SPACE	1	20	
39	ELEVATOR (SHUNT TRIP) #	27.0	3	60	6	- 8	1	b 40	SPACE	42	SPACE
41							c 42	SPACE			

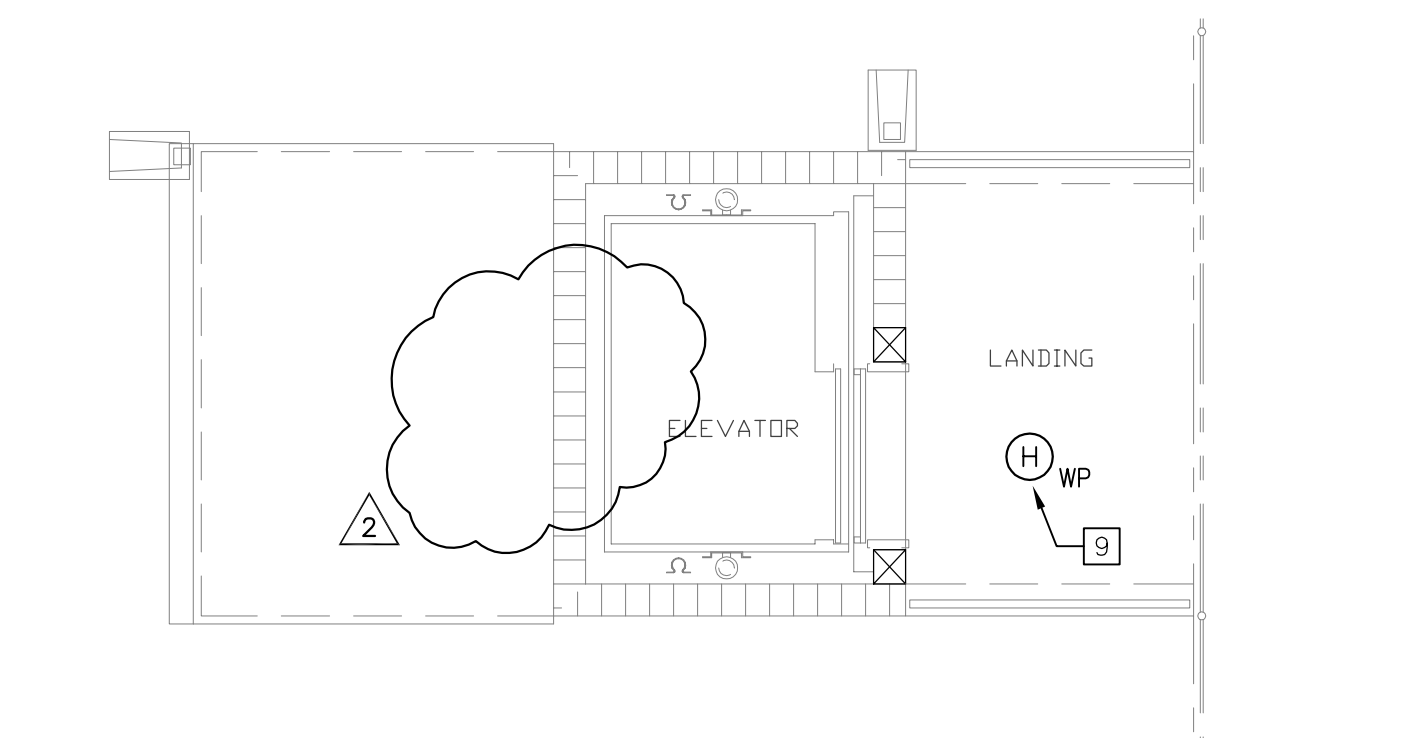
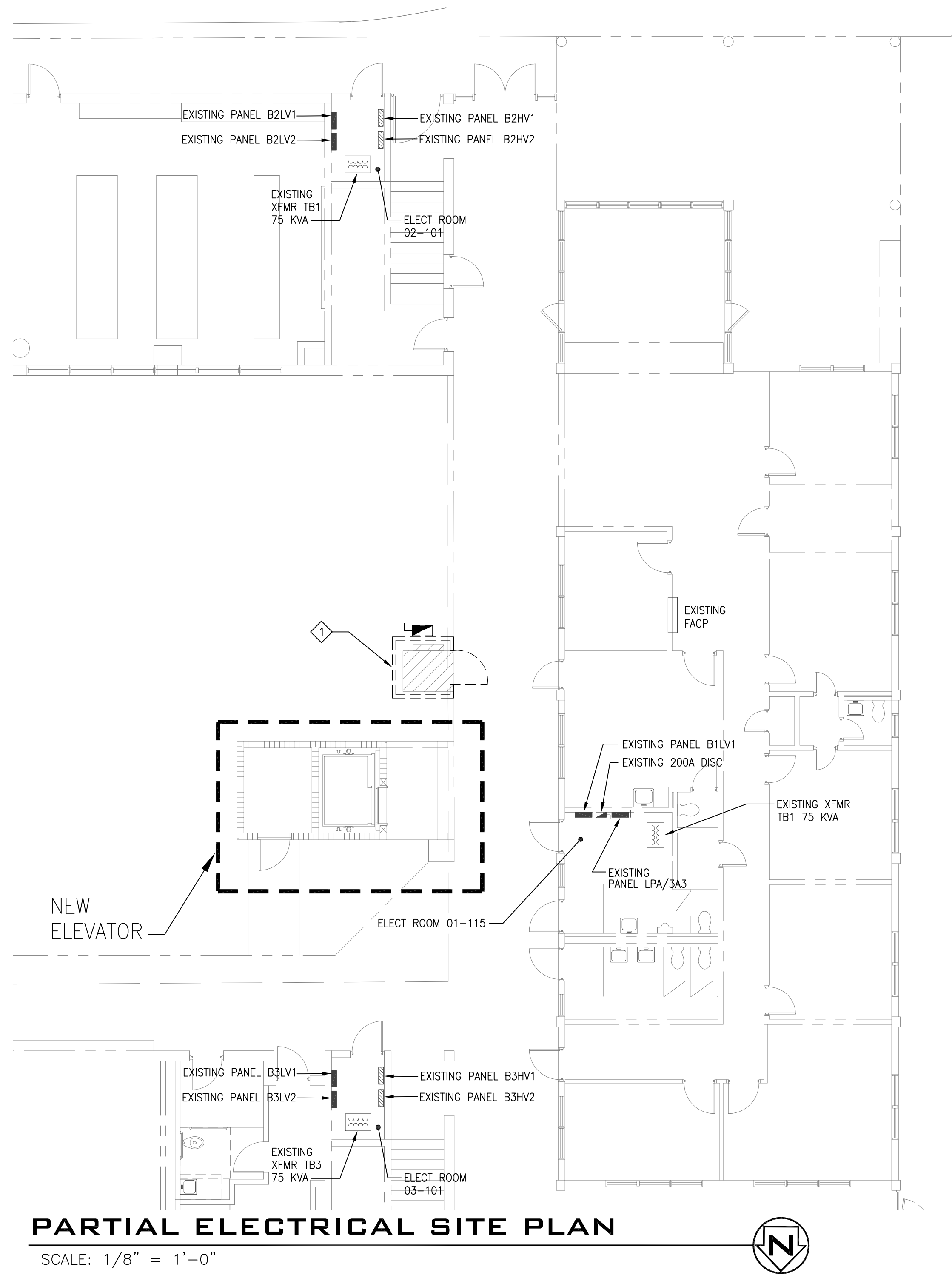
EQUIPMENT SERVED		CONNECTED LOAD	LF	DF	DEMAND LOAD	REMARKS:
EXISTING LOAD		17.52			17.52	- PROVIDE NEW TYPE WRITTEN DIRECTORY
NEW EQUIP LOAD		27.0			27.0	# PROVIDE NEW MATCHING CIRCUIT BREAKER
TOTAL KVA:		44.52				
AMPS:		54				

- DEMO NOTES:**
- EXISTING LIFT SHALL REMAIN IN SERVICE UNTIL NEW ELEVATOR IS FULLY OPERATIONAL. ONCE ELEVATOR IS OPERATIONAL REMOVE EXISTING LIFT. REMOVE EXISTING DISCONNECT, WIRING AND CONDUIT COMPLETELY BACK TO POINT OF ORIGIN OF BRANCH CIRCUIT. FIELD VERIFY EXISTING CONDITIONS PRIOR TO DEMOLITION.
- PLAN NOTES:**
- REFER TO ELEVATOR SHOP DRAWINGS FOR EXACT PLACEMENT OF ELECTRICAL DEVICES INSTALLED IN THE ELEVATOR PIT AND THE MACHINE ROOM. CIRCUIT LIGHTING FIXTURES UPSTREAM OF GFI RECEPTACLES.
 - PROVIDE FIRE ALARM RELAYS FOR ELEVATOR RECALL AND CAB NOTIFICATION.
 - EXTEND PHONE LINES FOR ELEVATOR CAR. EXTEND 3/4" CONDUIT WITH (2) CAT 5 CABLES FROM MACHINE ROOM TO EXISTING TELEPHONE SERVICE DEMARC POINT IN BUILDING 1.
 - PROVIDE SYSTEM MATCHING FIRE ALARM DEVICES. REFER TO ELEVATOR SHOP DRAWINGS FOR ELEVATOR RECALL REQUIREMENTS.
 - EXTEND BRANCH CIRCUIT TO INSIDE UNIT VIA CONTROLS, AND PER MANUFACTURERS WIRING DIAGRAMS.
 - INSIDE UNIT FED FROM OUTSIDE UNIT CU-1.
 - PROVIDE FUSED DISCONNECT SWITCH WITH REJECTION CLIPS.
 - PROVIDE WIRING AND DEVICES WITH AUXILIARY CONTROLS FOR CONTROL. IF BUILDING IS EVER SPRINKLERED IN THE FUTURE, ACTIVATION OF A MACHINE ROOM OR SHAFT HEAT DETECTOR SHALL SHUNT TRIP POWER TO THE ELEVATOR.
 - PROVIDE FIRE ALARM INTERFACE AND DEVICES FOR ELEVATOR RECALL. ACTIVATION OF A LANDING HEAT DETECTOR SHALL CAUSE THE ELEVATOR TO RECALL TO THE ALTERNATE FLOOR.
 - CIRCUIT NEW EXTERIOR LIGHTING FIXTURES TO EXISTING EXTERIOR LIGHTING CIRCUIT. FIELD VERIFY EXISTING VOLTAGE.
 - CIRCUIT NEW MAINTENANCE RECEPTACLE TO EXISTING AREA RECEPTACLE CIRCUIT, OR EXISTING ELEVATOR BRANCH CIRCUIT AFTER EXISTING ELEVATOR HAS BEEN REMOVED. EXISTING ELEVATOR IS FED FROM PANEL B1LV1.

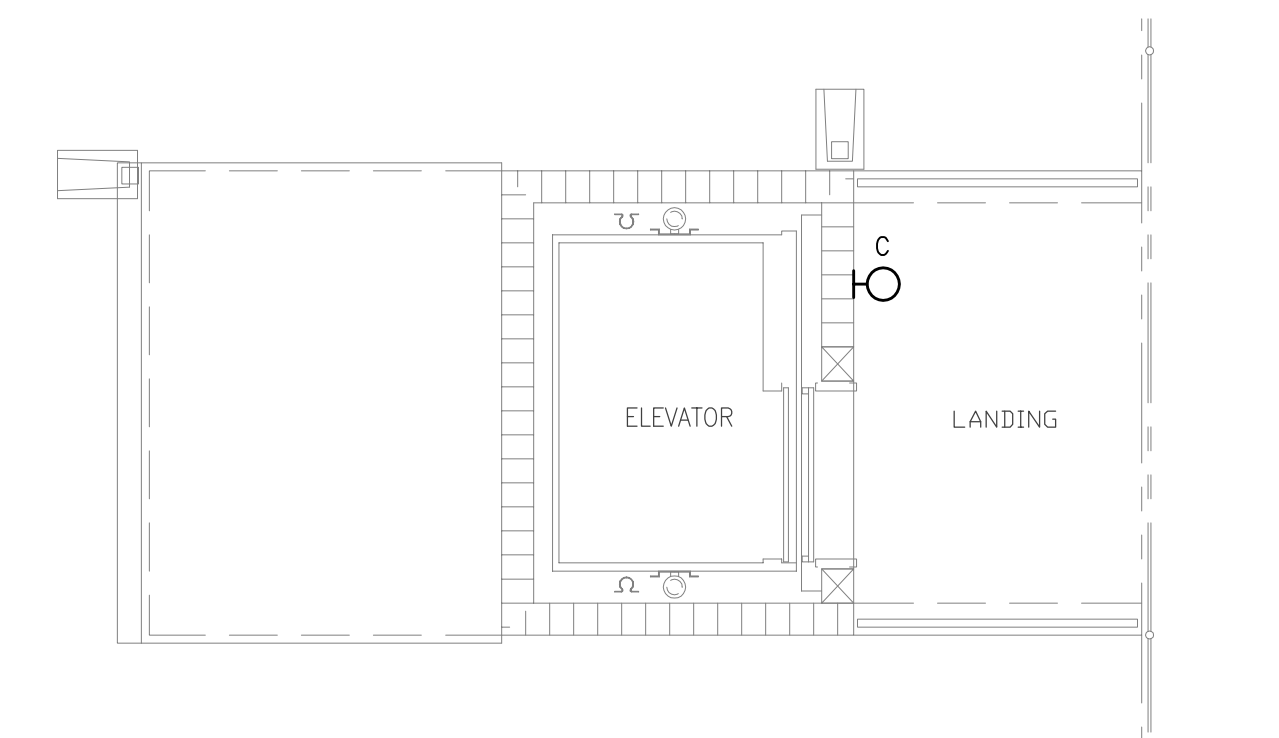
REVISION	ISSUED FOR PERMIT & CONSTRUCTION
DATE	05-28-10
REV#	1
DATE	06-14-10
REV#	2
DATE	06-24-10
REV#	3

2651 weston college drive
maitland, fl 32751
tel: 202, 253, 1201
fax: 202, 253, 1233
www.cegroup.com
license #008897

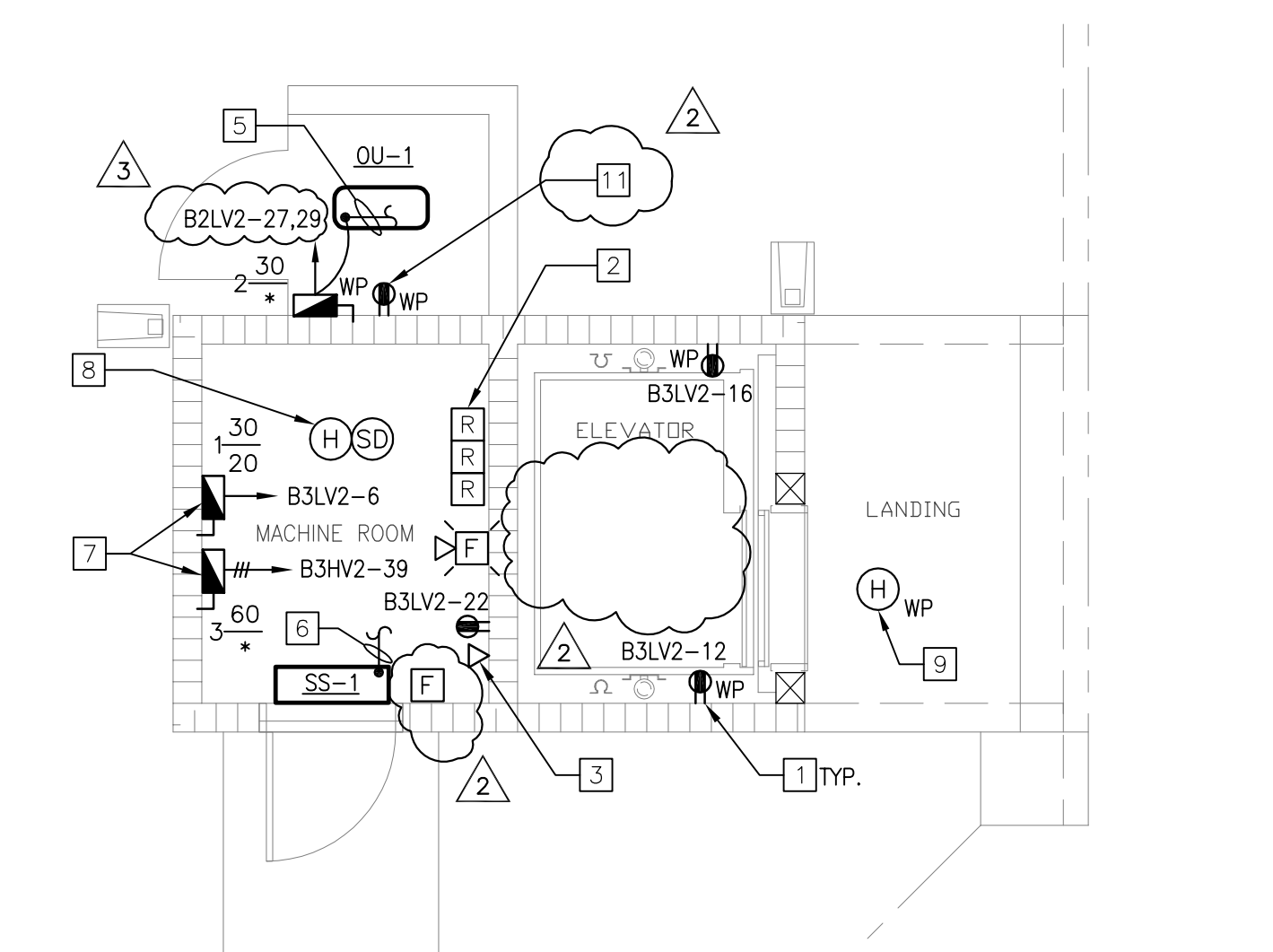
CONSTRUCTION ENGINEERING GROUP
consulting engineers



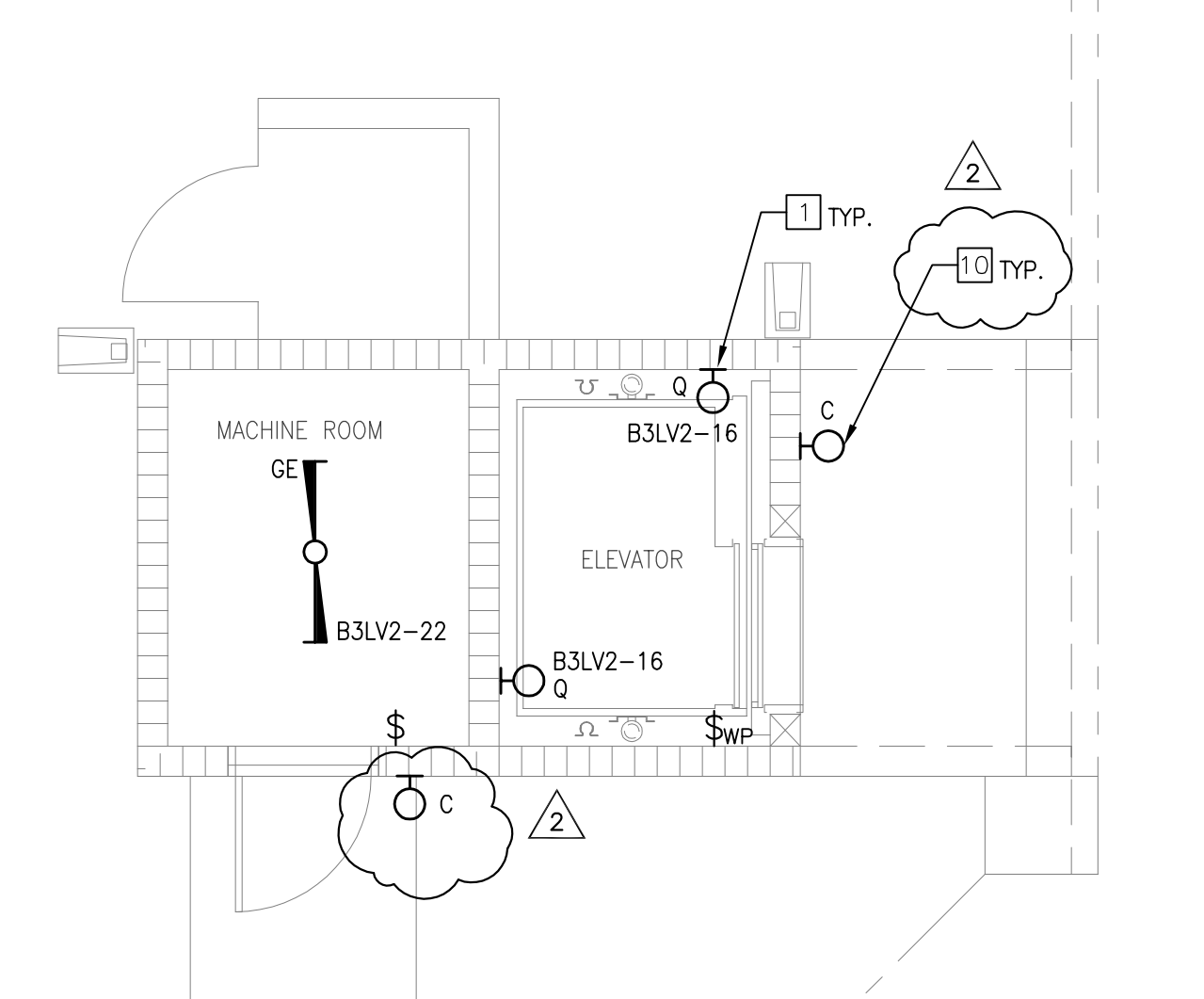
2ND FLOOR ELEVATOR POWER AND SYSTEMS PLAN
SCALE: 1/4" = 1'-0"



2ND FLOOR ELEVATOR LIGHTING PLAN
SCALE: 1/4" = 1'-0"



1ST FLOOR ELEVATOR POWER AND SYSTEMS PLAN
SCALE: 1/4" = 1'-0"



1ST FLOOR ELEVATOR LIGHTING PLAN
SCALE: 1/4" = 1'-0"

REFER TO ELEVATOR SHOP DRAWINGS FOR ALL RELATED ELECTRICAL REQUIREMENTS FOR THE ELEVATOR. DIFFERENT MANUFACTURERS WILL HAVE DIFFERENT REQUIREMENTS.

NEW ELEVATOR for EDGEWOOD JUNIOR/SENIOR HIGH SCHOOL
MERRITT ISLAND, FLORIDA
DRAWING TITLE
ELEVATOR ELECTRICAL PLANS

ENGINEER OF RECORD
DAVID E. ALLEY, PE
PE #55008

DATE	05-21-10
SCALE	AS NOTED
PROJ. NO.:	100190
DESIGNED BY:	DEA
DRAWN BY:	JPM
CHECKED BY:	DEA
DRAWING NO.	E2.0